

Understanding the Driver Behaviour page

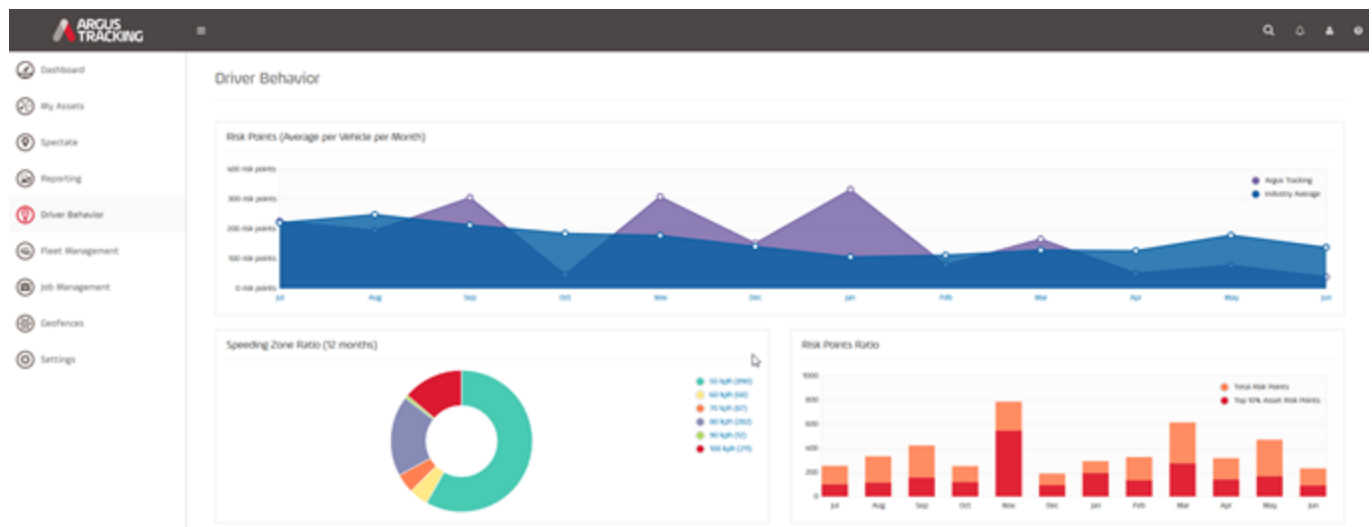
The driver behaviour page identifies the areas your drivers are most at risk.

To accumulate this driver behaviour data, risk points are applied to the dangerous driving events that put your drivers most at risk - Speeding. Extra risk points are applied when these speeding events occur in school zones, at night, or in adverse weather, so it is easy to identify your most at-risk drivers.

The driver behaviour page is divided into three separate driver behaviour charts.

Risk Points, Speeding Zone Ratio, and Risk Points Ratio

Tip: Clients on the MIDI or OMNI plan can drill down even further into their driver behaviour by clicking through to open more in-depth reporting.



Have any further questions?

Get in touch.

support@argustracking.com

Understanding the Driver Behaviour page

Risk Points

The Risk Point chart shows the average number of risk points earned per vehicle each month within your fleet (purple line), and is compared with the average number of risk points earned across the national average (fleet vehicles in a similar industry using Argus Tracking) (blue line).

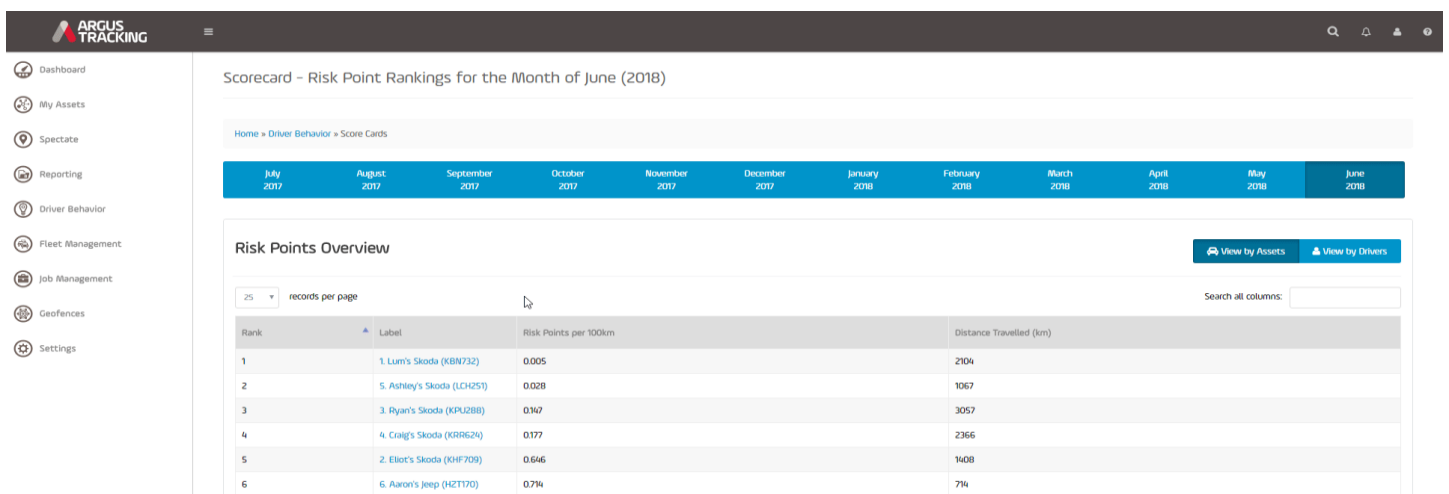
Tip: When you hover over each point in the graph, it displays the average number of risk points earned per vehicle.

To further drill down into this information, on the chart, click on the Month to open your Scorecard on a new page. The scorecard shows the rankings of drivers for the month, by the number of risk points earned. (MIDI and OMNI plans only)

Note: The risk points are calculated by the points earned per 100km, keeping comparisons fair, no matter how much or little your drivers drive.

The Driver ranked number 1 on the scorecard, is the driver with the least number of risk points earned, so is the driver "least at risk". The driver ranked last is the driver "most at risk". The scorecard also shows the total kilometers travelled by each driver.

You can then further drill down into the scorecard by clicking on each individual driver, to open up the vehicle summary page, which shows an overview of the 12 months of risk points earned by this person previous to the month you have drilled down into, the ratio of speeding zones where these risk points were earned, as well as a monthly breakdown of the risk points earned by this person. (MIDI and OMNI plans only)



Scorecard - Risk Point Rankings for the Month of June (2018)

Home > Driver Behavior > Score Cards

July 2017 August 2017 September 2017 October 2017 November 2017 December 2017 January 2018 February 2018 March 2018 April 2018 May 2018 June 2018

Risk Points Overview

25 records per page

View by Assets View by Drivers

Rank	Label	Risk Points per 100km	Distance Travelled (km)
1	1. Lum's Skoda (KBN732)	0.005	2104
2	5. Ashley's Skoda (LCH251)	0.028	1067
3	3. Ryan's Skoda (KPL288)	0.147	3057
4	4. Craig's Skoda (KRR624)	0.177	2366
5	2. Elliot's Skoda (KHF709)	0.646	1408
6	6. Aaron's Jeep (H2T170)	0.714	714



Have any further questions?

Get in touch.

support@argustracking.com

Understanding the Driver Behaviour page

The Risk Points Monthly Breakdown shows all the information on each risk point:

- the date the driver earned the risk point,
- the vehicle driven at the time,
- who the driver was (if driver ID was used),
- the location where the risk point/s was earned,
- the speed they were travelling at,
- the speed limit at that location,
- what attributed to the risk point being applied (eg. speeding, school zone speeding, adverse weather speeding, open road speeding, night time speeding, open road night time speeding, cruise speeding),
- the number of risk points applied (eg. more risk points are applied when speeding on the open road at night in adverse weather, than for speeding on a fine day as the risk is far greater)

Tip: Query Risk Points

If you do not think the application of a risk point in this event is correct (eg, the speed limit in this area does not seem to be correct), on this page there is the option to query the risk point, sending a message to Argus support to look into this event further.

Speeding Zone Ratio

The Speeding Zone Ratio chart shows all the speed zones where your drivers earned risk points in the last 12 months. At a glance, easily see which speed zones your drivers are most at risk in. Hover over each section in the chart to see the percentage of risk points occurring in this speed zone.

You can drill down further into the Speed Zone Ratio by clicking on each speed zone in the key, to take you to the Speed Zone Summary Page, showing the Speed Zone Data for each Month, and a monthly breakdown of the speeding incidents for each speed zone.

On the Speed Zone Summary, click on each speed to see the number of speed incidents occurring in that zone over the previous 12 months. As you click along the speedzones, a new line will be added to the chart, showing the other speed zones.

On the Speeding Incidents Monthly Breakdown, drivers are ranked by the number of overspeed incidents within that speed zone, enabling you to address different drivers' risk areas. Drivers with the most speeding incidents are ranked number 1, with the ranking decreasing as the number of speeding incidents decreases with each driver.



Have any further questions?

Get in touch.

support@argustracking.com

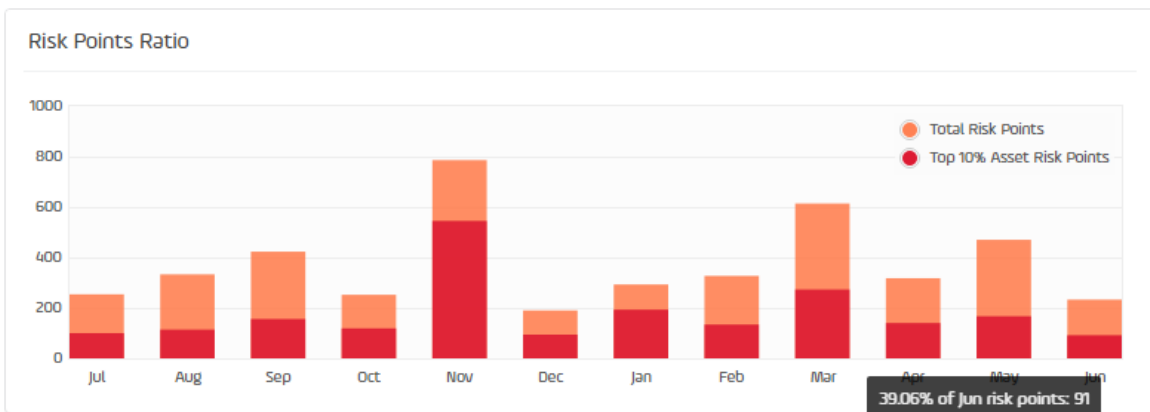
Understanding the Driver Behaviour page

Risk Points Ratio

The Risk Points Ratio page shows the ratio of risk points created by your 10% most at risk drivers each month, compared with the total risk points generated by all your fleet. When you hover over each bar in the chart, you will see the percentages.

This graph is a great way to ascertain whether majority of risk points created in your fleet are earned equally between drivers, or if they are created by a minority of outliers who are significantly more at-risk than the rest of your drivers.

In the example below, 39.06% of the risk points were generated by the 10% of your drivers most at risk, highlighting the drivers most at risk.




Have any further questions?
Get in touch.
support@argustracking.com